

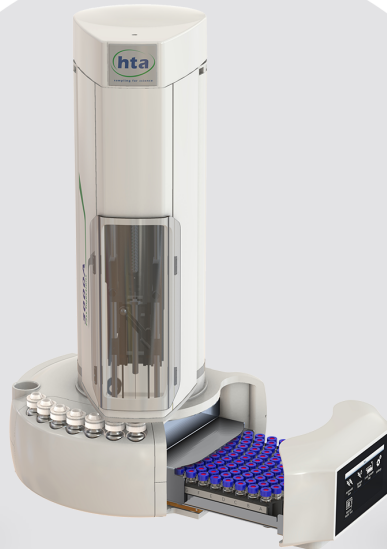


OEM AUTOSAMPLER

WE HAVE THE AUTOSAMPLER FOR YOUR APPLICATION



HT4000 series



3000 series
2000 series



HT1000 series

We have developed a wide range of versatile robotic platforms on which your own solution can be deployed. Our platforms cover every robotics need to inject liquid or gas samples, including: **HT4000** the "highest capacity and versatility" autosampler, **3000/2000** the "compact and elegant" autosampler, and **HT1000** the "most affordable" autosampler.

Let's start by picking up one of the autosampler platforms; we will finalize hardware configuration by definition of **accessories**, by including **add-ins** and by implementing **aesthetic customization** if necessary. You will appreciate our flexibility that allows to fulfill the **most challenging requirements in terms of performance, operations and integrations!**

By selecting the appropriate customization level, we can make **1-unit projects as well as 1000-units projects** worthwhile.

LIQUID HANDLING

- Dilution and Derivatization
- Sample displacement
- Standard addition
- Mixing
- Programmable sample depth

SAMPLE PREPARATION

- Vortex
- Shaker (Orbital, Sussultatory)
- Heater and Oven
- Rack cooling

BASIC CAPABILITIES

- Wide range of sample volume
- Wide range of sample viscosity
- Touch sensor
- Random access

INJECT

- Fast or slow injection
- Sandwich injection
- Cold or hot needle injection
- HPLC valve

OBJECTS HANDLING

- Object displacement
- Septum piercing
- Sample depressurization
- Tracking by BCR
- Decap and Recap

CLEANING

- Multiple solvent washing
- External needle cleaning
- Active washing by peristaltic
- Gas purging

SOFTWARE INTEGRATION: MULTIPLE OPTIONS AVAILABLE

We offer a **wide range of options to perform software integrations** to match the requirements of customers that need a quick and low effort integration and option to fit the needs of customers looking to complex and advanced integrations.

That includes: HTA's software, command line integrations, multi-vendor data system drivers, low level commands.

If you have integrated competitor products, you will feel the difference. Also in the case of most advanced integrations we have already taken care to include parameter validity checking and automatic handling of any non-critical, unexpected events.

ACCESS 30+ YEARS OF AUTOSAMPLER EXPERIENCE

Choosing HTA as your partner for an OEM autosampler will give you access to all **proprietary and patented technologies we have developed across 30 years.**

Since 1991, we have been developing and manufacturing **autosamplers and automated sample prep workstations** for a wide range of analytical applications. Our core competencies are robotics (motion control), liquid handling, object displacement, sample prep tasks such as heating, agitation, automated capping and decapping and several more.

COMPLIMENTARY SUPPORT AND SERVICES AVAILABLE

We understand it takes more than just designing and supplying a quality product in any OEM relationship.

We have a professional and **responsive team**, experts across a wide range of engineering and scientific disciplines, whom can work with you in all the phases of our collaboration.

Our **LEAN manufacturing system** offers flexibility and rapid adaption to your market changes. When it comes to **service**, enjoy service and diagnostic software utilities and spare parts stock for standard parts. Experience **HTA Customer Portal**: access spare parts catalogue and an online knowledge base for self-service troubleshooting.

TECHNICAL SPECIFICATIONS

The technical specification below refers to the standard configuration and not to the customized solutions you may have considered.

Physical features

Dimensions (WxHxD):
Weight:
Power supply:
PC link:
I/O connector:

2000/3000 series

from 280x570x320mm
from 6.4 to 10kg
100-240±10%Vac; 50-60Hz; from 55W
LAN; optional: RS232
Included

HT4000 series

310x705x690mm
15kg
100-240±10%Vac; 50-60Hz; from 55W
LAN
Included

HT1000 series

355x380x560mm
8.0kg
100-240±10%Vac; 50-60Hz; from 15W
USB
Included

Installation layout

Bench Top:
Top mounted on analyzer:

√ (possible)
√ (recommended)

√ (recommended)
√ (possible)

√

User interface

Touch screen:
Virtual touch screen:
Keypad:

√
√
√

√
√

√

Sample vessels

Capacity:
Vial (20ml or less):
Vial (20ml or more):
96-well plate:
Tubes:
Piercing capability:

Small to medium
√
√
√
++

Medium to high
√
√
√
+++

Medium
√
√
√
+

Liquid and Gas handling tool

Microsyringes:
Transfer Line (not heated):
Transfer Line (heated):

√
√
√

√
√
√

√

HTA s.r.l.

via del Mella, 77-79 - 25131 Brescia - ITALY
T: +39 030 3582920
www.hta-it.com | enquiry@hta-it.com



As part of our integrity commitment we don't market any analyser, nor do we have sister companies that do so. In this way, we want to prevent any form of competition with our customers, allowing our team and organization to focus on what we can do best: autosamplers!